



# 2020 CATALOG



[www.usameasurements.com](http://www.usameasurements.com)  
4005 W Reno Ave Ste E Las Vegas, NV 89118  
Phone: 800-711-2237

# TABLE OF CONTENT

## AXLE SCALE

|                              |   |
|------------------------------|---|
| US-WIM3113 Speed Weigh ..... | 5 |
|------------------------------|---|

## PLANE SCALE

|                                  |   |
|----------------------------------|---|
| US-AW Airweigh Plane Scale ..... | 7 |
|----------------------------------|---|

## BENCH SCALE

|  |    |
|--|----|
| US-WM "Weigh Master" Bench Scale ..... | 9  |
| US-BT Benchtek .....                   | 10 |
| US-EW Eweigh .....                     | 11 |
| US-iW iWash .....                      | 12 |

## COUNTING SCALE

|  |    |
|--|----|
| US-iC Army Counting Scale iCount ..... | 14 |
|--|----|

## CRANE SCALE

|  |    |
|--|----|
| US-LC "The Lifter" Crane Scale .....         | 15 |
| US-BL "Big Lift" Crane Scale .....           | 15 |
| US-BLW "Big Lift Wireless" Crane Scale ..... | 16 |

## INDICATORS

|   |    |
|---|----|
| US-1011 Digital Indicator .....   | 19 |
| US-2011 & US-2011SS Digital Indicator NTEP Approved (Legal for trade) ..... | 19 |
| US-3011 Digital Indicator NTEP Approved (Legal for trade) .....             | 20 |
| US-4011 Digital Indicator NTEP Approved (Legal for trade) .....             | 20 |
| US-5011 Digital Indicator .....   | 21 |

## FLOORS SCALES

|   |    |
|---|----|
| US-LD "Little Drummer" Drum Scale ..... | 23 |
| US-E "Etek" Floor Scale .....           | 24 |
| US-TB "Thunderbolt" Floor Scale .....   | 25 |

## LABEL PRINTING SCALE

|  |    |
|--|----|
| US-DL9000 (Ethernet, Wireless Networking, & USB) NTEP Approved ..... | 27 |
|--|----|

**LIVESTOCK SCALES**

|   |    |
|---|----|
| US-LS "The Livestock" Animal Scales ..... | 29 |
| US-BC "Big Blue" Livestock Scale .....    | 30 |
| US-ESB "Easy Squeezy" Weigh Bars .....    | 32 |

**PRICE COMPUTING SCALE**

|  |    |
|--|----|
| US-PC "The Pricer" Price Computing Scale ..... | 34 |
|--|----|

**SHIPPING SCALE**

|   |    |
|---|----|
| US-LS "The Little Shipper" Platform Scale NTEP Approved ..... | 36 |
|---|----|

**WHEEL WEIGHERS**

|                                    |    |
|------------------------------------|----|
| US-GW "iPads" Wheel Weigher .....  | 38 |
| US-M "iWheel" Wheel Weighers ..... | 39 |

**ACCESORIES**

|                        |    |
|------------------------|----|
| OS-2130D Printer ..... | 41 |
|------------------------|----|

USA Measurements is an American Brand that specializes in industrial weighing and measuring applications. "We out Measure the Competition." Our goal is to focus on providing customers reliable, durable, and accurate scales and other measuring devices for years to come. We offer a number of specialized scales for warehouses, distilleries, airplanes, trucks, recycling, manufacturing, livestock, and much more. All of our products are designed with robust steel, overload protection, long warranties, and local service all over the United States. We provide local service nationwide to ensure our customers products are always up and working so you can make money worry free.

**We strive for 5 stars in everything we do.**

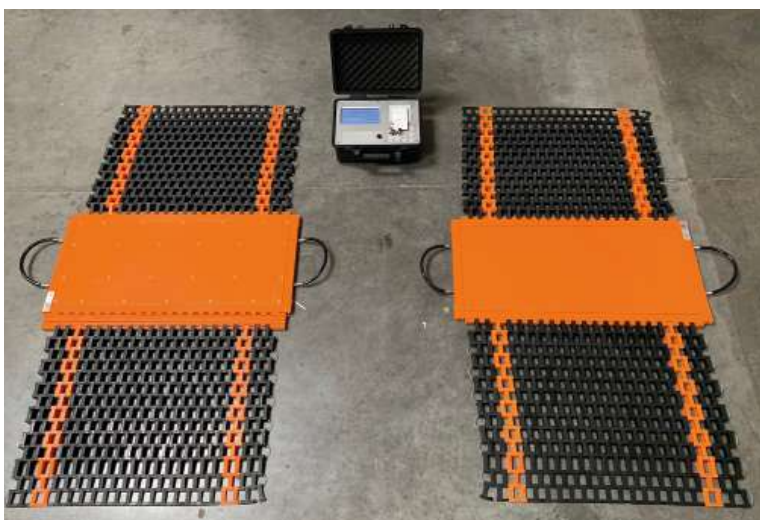


# AXLE SCALE

# US-WIM3113 Speed Weigh

## IN MOTION AXL SCALE

USA Measurements has designed an efficient, accurate, and easy to use system to weigh trucks. Traditional axle scales require the user to stop on each axle and have someone to operate the scale. This takes time and requires money to keep someone operating your scale. With the US-WIM3113 "Speed Weigh" this is a hands free operation. The user will drive straight across the scale with-out stopping. Our US-M6 indicator will automatically print a receipt with each axle weight and gross weight. This system is ideal for high traffic use, logistics company, avoiding DOT fines, shipping applications, mining applications, and much more.



## FEATURES

- Pad Size: 31.5"x 13.78 x 0.87"
- Ramp size: 31.5" x 59"
- 80,000 lb Capacity for 2 pads
- Portable with Carrying Handles
- Load cell based with high Weighing In-Motion accuracy
- OIML Standard
- Static Weighing Mode
- Wide pads to weigh single or dual tires
- 120% overload protection
- 1 Year Manufacturer Warranty
- Non-NTEP (Not Legal for Trade)

**SUGGESTED RETAIL PRICE: \$14,995**

## US M6 INDICATOR



## US M6 INDICATOR FEATURES:

- Pad Size: 31.5"x 13.78 x 0.87"
- Ramp size: 31.5" x 59"
- 80,000 lb Capacity for 2 pads
- Portable with Carrying Handles
- Load cell based with high Weighing In-Motion accuracy
- OIML Standard
- Static Weighing Mode
- Wide pads to weigh single or dual tires
- 120% overload protection
- 1 Year Manufacturer Warranty
- Non-NTEP (Not Legal for Trade)

## US M6 INDICATOR SPECIFICATIONS:

- Full-scale temperature coefficient: 5ppm/°C
- Sampling speed: 200times/sec
- The speed of display renewal: 12.5times/sec
- System non-linearity <0.01%
- Impulse source of sensor: DC 5V±2%
- Operating temperature range: 0°C–40°C
- Power supply sink (without the sensor): 70mA
- No printing and no back lightin, 1000mA (printing)

**PLANE  
SCALE**

# US-AW Airweigh Plane Scale

## PLANE SCALE

USA Measurements US-AW “Air Weigh” airplane, aircraft, and jet scale. To be used for weighing all types of airplanes. The US-AW is available in our 24”x16” platform scale. With the built in ramped ends and 2”H. Getting on and off the pads is simple and easy to do. Our “Air Weigh” comes in a 3 pads set with digital indicator. The digital display can read individual weights and total gross weight.



## FEATURES

- Capacity: 10,000 lb to 80,000 lb
- Readability/Accuracy: 5 lb to 20 lb
- Size: 24” x 16” x 2”
- Load Cells: 6 per pad
- Indicator Power: AC/DC, built-in rechargeable battery (100 hrs)
- Portable, low profile and heavy duty construction
- Easily weighs large vehicles such as trucks, vans, tankers and trailers
- Interlocking skid resistance ramps
- Two handles and two wheels for easy carry and moving
- Easy to use; user can operator and weigh single-handedly
- Includes indicator suitcase for protection and portability
- Built-in printer that prints weight of each pad and accumulates gross weight with time / date

**SUGGESTED RETAIL PRICE: \$12,995**

## US-M2416

| MODEL NUMBER  | CAPACITY          | PLATFORM SIZE        |
|---------------|-------------------|----------------------|
| US-AW2416-10K | 10,000 lb x 2 lb  | Steel Plated 24”x16” |
| US-AW2416-20K | 20,000 lb x 5 lb  | Steel Plated 24”x16” |
| US-AW2416-30K | 30,000 lb x 5 lb  | Steel Plated 24”x16” |
| US-AW2416-40K | 40,000 lb x 10 lb | Steel Plated 24”x16” |
| US-AW2416-50K | 50,000 lb x 10 lb | Steel Plated 24”x16” |
| US-AW2416-60K | 60,000 lb x 10 lb | Steel Plated 24”x16” |
| US-AW2416-70K | 70,000 lb x 10 lb | Steel Plated 24”x16” |
| US-AW2416-80K | 80,000 lb x 20 lb | Steel Plated 24”x16” |

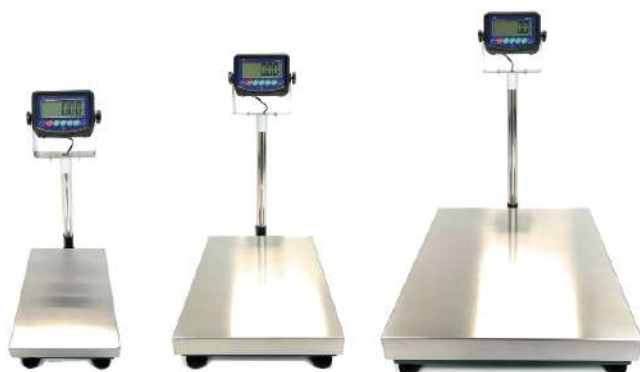


# BENCH SCALES

# US-WM “Weigh Master” Bench Scale

## BENCH SCALE

USA Measurements “WeighMaster” bench scales are designed for use in recycling, shipping, warehouses, weighing containers, seafood, 5 gallon buckets, and for customers requiring a quality scale for years of reliable usage. The US-WM series comes in three sizes: 12”x16”, 16”x20”, or 24”x24”.



## FEATURES

- Stainless Steel Pan
- 300 lb, 500 lb, or 1,000 lb Capacity • Includes Column
- 100% Overload Protection
- Square Tube Structure
- (4) Adjustable Leveling Feet
- Alloy Steel Load Cell
- Safety Screws for Protection
- Arrives Calibrated (Plug & Weigh) • 304 Graded Stainless Steel Pan
- 2 Year Manufacturer Warranty -MW

## SUGGESTED RETAIL PRICE:

US-WM1216: \$595

US-WM1620: \$675

US-WM2424: \$895



## US-MW

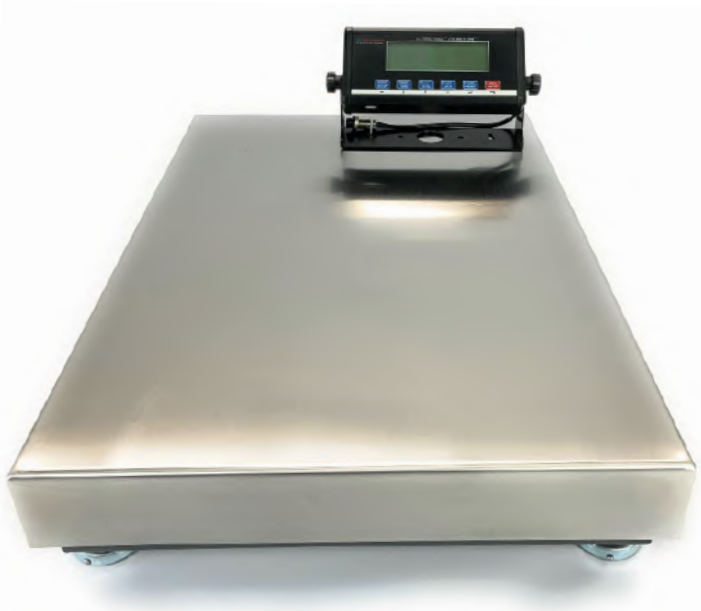
| MODEL NUMBER | CAPACITY          | PLATFORM SIZE                   |
|--------------|-------------------|---------------------------------|
| US-WM1216    | 300 lb x 0.05 lb  | Stainless Steel Platter 12”x16” |
| US-WM1620    | 500 lb x 0.1 lb   | Stainless Steel Platter 16”x20” |
| US-WM2424    | 1,000 lb x 0.2 lb | Stainless Steel Platter 24”x24” |



# US-BT Benchtek

## US-BT BENCHTEK

USA Measurements “BenchTek” platform scales are designed for use in recycling, shipping, warehouses, weighing containers, seafood, 5 gallon buckets, and for customers requiring a quality scale for years to come. The US-BT series is built with a robust steel frame, steel column, and large US-4011 LCD indicator.



### FEATURES

- Multiple Platform Sizes
- Multiple Weighing Capacities
- 20” Column Height
- 100% Overload Protection
- Leveling Bubble on Frame
- (4) Adjustable Leveling Feet
- Alloy Steel Load Cell
- Safety Screws for Protection
- Arrives Calibrated (Plug & Weigh) • 304 Graded Stainless Steel Pan
- 2 Year Manufacturer Warranty

| SUGGESTED RETAIL PRICE: |
|-------------------------|
| US-BT1214: \$745        |
| US-BT1620: \$825        |
| US-BT1925: \$995        |



## US-BT

| MODEL NUMBER | CAPACITY         | PLATFORM SIZE |
|--------------|------------------|---------------|
| US-BT1214    | 150 lb x 0.02 lb | 12”x14”       |
| US-BT1620    | 300 lb x 0.05 lb | 16”x20”       |
| US-BT1925    | 600 lb x 0.1 lb  | 19”x25”       |



# US-EW Eweigh

## US-EW EWEIGH

USA Measurements "Eweigh" platform scales are NTEP approved (Legal for trade) for buying or selling based on weight. The US-E series is designed for use recycling, shipping, warehouses, weighing containers, seafood, 5 gallon buckets, and for customers requiring a quality scale for years to come. The US-E series is built with a robust steel frame, steel column, and large LCD indicator.



### FEATURES

- Low Profile Stainless Steel Pan
- 100 lb, 200 lb, & 1,000 lb Capacity
- 22" Column Height on 12"
- 28" Column Height on 16" & 24"
- 100% Overload Protection
- Leveling Bubble on Frame
- (4) Adjustable Leveling Feet
- Alloy Steel Load Cell
- Safety Screws for Protection
- Arrives Calibrated (Plug & Weigh)
- 304 Graded Stainless Steel Pan
- 2 Year Manufacturer Warranty
- NTEP Approved 19-134A1 (Legal for trade)

### SUGGESTED RETAIL PRICE:

US-EW1214: \$725

US-EW1620: \$865

US-EW2424: \$1045



## US-EW

| MODEL NUMBER | CAPACITY          | PLATFORM SIZE |
|--------------|-------------------|---------------|
| US-EW1214    | 100 lb x 0.02 lb  | 12"x14"       |
| US-EW1620    | 200 lb x 0.05 lb  | 16"x20"       |
| US-EW2424    | 1,000 lb x 0.2 lb | 24"x24"       |



# US-iW iWASH

## US-iW iWASH

USA Measurements “iWash” platform scales are NTEP approved (Legal for trade) for buying or selling based on weight. The US-iWash series is stainless steel and great for wash down applications. Great for use in recycling, seafood, outdoor use, spills, wash down applications, and for customers requiring a quality scale for years to come.

### FEATURES

- 100 lb, 200 lb, & 1,000 lb Capacity
- 22” Column Height on 12”
- 28” Column Height on 16” & 24”
- Wash Down Safe IP67
- 100% Overload Protection
- Leveling Bubble on Frame
- (4) Adjustable Leveling Feet
- Stainless Steel Load Cell
- Safety Screws for Protection
- Arrives Calibrated (Plug & Weigh)
- 304 Graded Stainless Steel Pan
- 2 Year Manufacturer Warranty
- NTEP Approved 19-134A1 (Legal for trade)



### SUGGESTED RETAIL PRICE:

US-i1214W: \$1,045

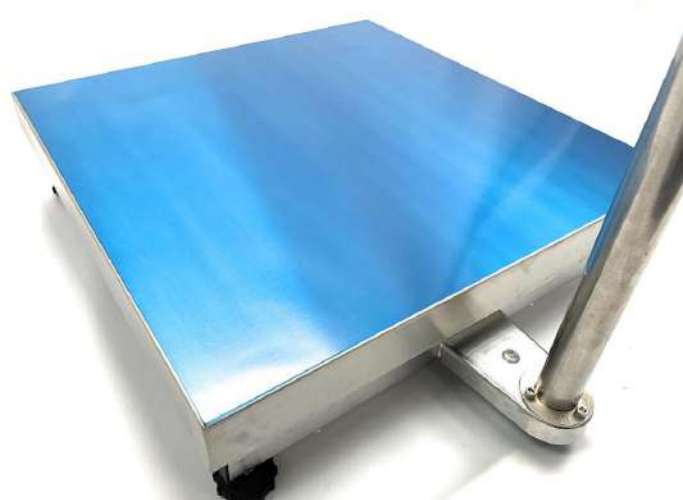
US-i1620W: \$1,165

US-i2424W: \$1,345



## US-EW

| MODEL NUMBER | CAPACITY          | PLATFORM SIZE |
|--------------|-------------------|---------------|
| US-i1214W    | 100 lb x 0.02 lb  | 12"x14"       |
| US-i1620W    | 200 lb x 0.05 lb  | 16"x20"       |
| US-i2424W    | 1,000 lb x 0.2 lb | 24"x24"       |



# COUNTING SCALES

# US-iC Army Counting Scale “iCount”

## US-iC ARMY

USA Measurements Army “iCount” scales are designed to precisely count pieces to take out the guessing work and human error. Our scales are designed with 150% capacity overload protection for use on a day to day operation. The scales arrives calibrated and ready for use (plug and weigh) and are very easy to calibrate by the user if ever needed.



## FEATURES

- 11”x8” Stainless Steel Pan
- 13 lb, 33 lb, 66 lb, & 100 lb Capacities
- (3) LCD Diamond Blue Screen
- Full Numeric Keypad
- Units: Kg, Lb, Oz, Pcs
- Accumulation Function
- 150% Overload Protection
- Check Weigh (Hi, Ok, Lo)
- Leveling Bubble on Base
- (4) Adjustable Leveling Feet
- Single Point Load Cell
- RS-232 for PC or Printer
- Max Divisions 1:30,0000
- Arrives Calibrated (Plug & Weigh)
- Rechargeable Lead Acid Battery
- 2 Year Manufacturer Warranty
- Operating Temp: -10°C to 40°C (14°F to 104°F)

## SUGGESTED RETAIL PRICE:

US-iC12: \$645

US-iC30: \$675

US-iC60: \$715

US-iC100: \$745

## US-BT

| MODEL NUMBER | CAPACITY     | PLATFORM SIZE                  |
|--------------|--------------|--------------------------------|
| US-iC12      | 12 lb x .02g | Stainless Steel Platter 11”x8” |
| US-iC30      | 33 lb x 0.2g | Stainless Steel Platter 11”x8” |
| US-iC60      | 66 lb x 0.5g | Stainless Steel Platter 11”x8” |
| US-iC100     | 100 lb x 1g  | Stainless Steel Platter 11”x8” |



# CRANE SCALES

## US-LC “The Lifter” Crane Scale

### US-LC

USA Measurements “The Lifter” US-LC crane scale. Built with a robust steel enclosure for heavy duty use. Great for applications requiring overhead lifting, use with a crane, and lifting objects overhead. USA Measurements US-LC series crane scale comes with wireless remote, calibrated for accuracy, and 2 year warranty.



### FEATURES

- Capacity: 10,000 lb
- Accuracy: 2 lb
- Calibrated in Pounds
- Tare range: full cap.
- Load Cell Material: alloy steel
- Calibrated for accuracy
- AC/DC adapter (included)
- Built-in rechargeable battery
- 1 Year Manufacturer Warranty • Non-NTEP  
(Not legal for trade)

### SUGGESTED RETAIL PRICE:

US-LC6K: \$995

US-LC10K: \$1095

US-LC20K: \$1795

US-LC40K: \$2095

### US-LC

| MODEL NUMBER | CAPACITY          |
|--------------|-------------------|
| US-LC6K      | 6,000 lb x 1 lb   |
| US-LC10K     | 10,000 lb x 2 lb  |
| US-LC20K     | 20,000 lb x 5 lb  |
| US-LC40K     | 40,000 lb x 10 lb |

## US-BL “Big Lift” Crane Scale

### US-BL

USA Measurements “Big Lift” crane scale for heavy duty applications. Our bright LED green display can be seen from any far distances. The built in rechargeable battery last up to 80 hours. Our easy to use scale comes in a 10,000 lb capacity with a 2 lb accuracy. The scale is built with a 200% overload protection, 1/5” thick aluminum steel housing, and impact resistant load cell.



### SPECIFICATIONS:

- Capacity: 10,000 lb
- Accuracy: 2 lb
- Calibrated in Pounds
- Tare range: full cap.
- Load Cell Material: alloy steel
- Calibrated for accuracy
- AC/DC adapter (included)
- Built-in rechargeable battery
- 2 Year Warranty on Frame
- 2 Year Warranty on Electronics • Non-NTEP (Not legal for trade)

### SUGGESTED RETAIL PRICE:

US-BL6K: \$1295

US-BL10K: \$1395

US-BL20K: \$2095

US-BL40K: \$2395

### US-BL

| MODEL NUMBER | CAPACITY          |
|--------------|-------------------|
| US-BL6K      | 6,000 lb x 1 lb   |
| US-BL10K     | 10,000 lb x 2 lb  |
| US-BL20K     | 20,000 lb x 5 lb  |
| US-BL40K     | 40,000 lb x 10 lb |

# US-BLW “Big Lift Wireless” Crane Scale

## US-BLW

USA Measurements “Big Lift Wireless” crane scale with handheld display. Great for heavy duty applications. Our bright LCD handheld display makes weighing even easier with our US-WFX display. The built in rechargeable battery last up to 80 hours. Our easy to use scale comes in a 10,000 lb capacity with a 2 lb accuracy. The scale is built with a 200% overload protection, 1/5” thick aluminum steel housing, and impact resistant load cell.



## FEATURES

- Capacity: 10,000 lb
- Accuracy: 2 lb
- Units: LB or KG
- US-WFX Handheld Display
  - Calibrated in Pounds
- Tare range: full cap.
- Load Cell Material: alloy steel
- Calibrated for accuracy
- AC/DC adapter (included)
- Built-in rechargeable battery
- 2 Year Warranty on Frame
- 2 Year Warranty on Electronics • Non-NTEP (Not legal for trade) • US-WFX Wireless Manual

## SUGGESTED RETAIL PRICE:

US-BLW6K: \$1145

US-BLW10K: \$1345

US-BLW20K: \$2795

US-BLW40K: \$3595

## US-BL

| MODEL NUMBER | CAPACITY          |
|--------------|-------------------|
| US-BLW6K     | 6,000 lb x 1 lb   |
| US-BLW10K    | 10,000 lb x 2 lb  |
| US-BLW20K    | 20,000 lb x 5 lb  |
| US-BLW40K    | 40,000 lb x 10 lb |

# INDICATORS

## US-1011 Digital Indicator

### US-1011

The US-1011 indicator powers up to (4) 350 ohm load cells, has a built in LCD display, and rechargeable battery that last up to 80 hours. The easy to use indicator comes featured with the following functions: accumulation, percent weighing, checking weighing, and counting parts. Our US-1011 is user friendly and can be calibrated by any user.



**SUGGESTED RETAIL PRICE: \$445**

### FEATURES

- LCD Backlight Display
- 6" Digit Size
- Net, Total, Hold, Zero, & Accumulation
- Units: Lb, Kg, % weight
- Counting Function
- Rechargeable Battery
- 110V Power Adapter
- Animal Scale Function
- Check weigh (Hi/Ok/Lo)
- RS-232 Output
- Powers (4) 350 ohm Load Cells
- Dimensions: 9.5"x4.9"x2.5"
- Operating Temp: -10°C to 40°C (14°F to 104°F)

## US-2011 & US-2011SS Digital Indicator NTEP Approved (Legal for trade)

### US-2011 & US-2011SS

USA Measurements US-2011 LCD indicator features large 1.2" digits for an easy to read display of the calculated weight. Our NTEP approved (legal for trade) indicator can be used in a variety of weighing applications. Such as livestock scales, recycling, ltl freight, and distilleries.



### FEATURES

- LCD Backlight Display
- 2" LCD Digit Size
- 30,000 Divisions
- Units: LB or KG
- 110V Power Adapter
- 6V/4Ah Rechargeable Battery
- Accumulation Function
- Animal Weigh Function
- Check weigh Function (Hi/Ok/Lo)
- RS-232 Output
- Powers (4) 350 ohm Load Cells
- Operating Temp: -10°C to 40°C (14°F to 104°F)

**SUGGESTED RETAIL PRICE:**

**US-2011: \$525**

**US-2011SS: \$675**



## US-3011 Digital Indicator NTEP Approved (Legal for trade)

### US-3011

USA Measurements US-3011 LCD indicator features large 1" digits for an easy to read display of the calculated weight. Our NTEP approved (legal for trade) indicator can be used in a variety of weighing applications. Such as livestock, recycling, ltl freight, fishing applications, and distilleries. The indicator is commonly used with our bench scales, floor scales, shipping scales, and pallet jack scales.



#### SUGGESTED RETAIL PRICE:

US-3011: \$625

#### FEATURES

- Automatic Zero Tracking (AZT)
- Initial Zero Setting Mechanism (IZSM)
- Automatic Zero Setting Mechanism (AZT) • Semi-Automatic Zero (Push Button) Zero • Semi-Automatic (Push Button) Tare
- AC/DC Power
- RS-232
- Battery Saving Feature
- LCD Display
- Motion Detection
- Unit Key
- lb/oz/kg/g units
- Battery Operation with Low Battery Indication • Gross/Net Display
- Gross/Net Weight Accumulation

## US-4011 Digital Indicator NTEP Approved (Legal for trade)

### US-4011

USA Measurements US-4011 LCD indicator features a large easy to read digital display. Our easy to use indicator can be used in a variety of weighing applications. Such as livestock, recycling, ltl freight, fishing applications, and distilleries. The indicator is commonly used with our bench scales, floor scales, shipping scales, livestock scales, and pallet jack scales.



#### SUGGESTED RETAIL PRICE:

US-4011: \$595

#### FEATURES

- LCD Backlight Display
- Net, Total, Hold, Zero, & Peak
- Units: Lb, Oz, Kg, Lb:oz, grams, % weight • Counting Function
- Battery Powered
- 110V Power Adapter
- 4xAA Batteries (Included)
- Check weigh Function (Hi/Ok/Lo)
- USB and RS-232 Output
- Powers (4) 350 ohm Load Cells
- Dimensions: 9.5"x4.9"x2.5"
- Operating Temp: -10°C to 40°C (14°F to 104°F)

# US-5011 Digital Indicator

## US-5011

USA Measurements US-5011 LCD indicator features a large easy to read digital display. Our easy to use indicator can be used in a variety of weighing applications. Such as livestock, recycling, ltl freight, fishing applications, and distilleries. The indicator is commonly used with our bench scales, floor scales, shipping scales, livestock scales, and pallet jack scales.



## FEATURES

- LCD Backlight Display • Zero, Net, Hold, & Tare • Units: lb or kg
- Simple Design
- Battery Powered
- 110V Power Adapter
- 4xAA Batteries (Included)
- USB and RS-232 Output
- Powers (4) 350 ohm Load Cells
- Dimensions: 9.5"x4.9"x2.5"
- Operating Temp: -10°C to 40°C (14°F to 104°F)

## SUGGESTED RETAIL PRICE:

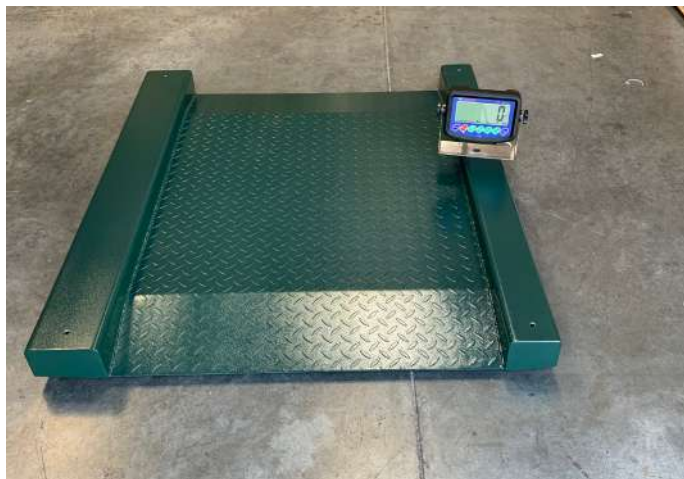
US-5011: \$495

# FLOOR SCALES

# US-LD “Little Drummer” Drum Scale

## US-LD

USA Measurements US-LD “The Little Drummer” floor scale. Designed with a platform height of 1.5”. Making it very easy to roll on and off the scale. The scale has a 31”x31” inside weighing surface and live side rails. The US-LD has a 5,000 lb capacity with 1 lb accuracy. Great for use with weighing drums, containers, portable applications, and use with dollies.



## SPECIFICATIONS

- 31”x31” Inside Weighing Surface • Live Side Rails
- 4 Load Cell System
- Ball Swivel Leveling Feet
- Low Profile Design 1.5” H
- 200% Overload Protection
- 4” Integrated Scale Ramps
- 5,000 lb Capacity
- 1 lb Scale Accuracy
- 5 Year Warranty on Steel Frame
- 2 Year Warranty on Electronics
- Non-NTEP (Not legal for trade)

## SUGGESTED RETAIL PRICE:

US-LD2727: \$1145

US-LD3131: \$1345

US-LD2439: \$1245

US-LD5248: \$2295

## US-LD

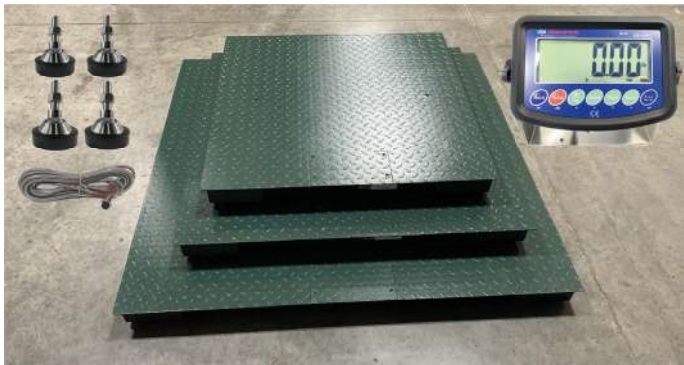
| MODEL NUMBER | CAPACITY          | PLATFORM SIZE                 |
|--------------|-------------------|-------------------------------|
| US-LD2727    | 1,000 lb x 0.2lb  | Carbon Steel Platform 27”x27” |
| US-LD2430    | 2,000 lb x 0.5 lb | Carbon Steel Platform 24”x30” |
| US-LD3131    | 5,000 lb x 1 lb   | Carbon Steel Platform 31”x31” |
| US-LD4852    | 10,000 lb x 1 lb  | Carbon Steel Platform 48”x52” |



# US-E “Etek” Floor Scale

## US-E

USA Measurements “Etek” floor scale is designed for applications that require a reliable, durable, and efficient scale for years to come. US-E comes in three size: 40”x40”, 48”x48”, and 60”x60” in a 1,000 lb to 10,000 lb selectable capacities. Our bright, large, and easy to read US-1011 indicator is included. Built with a robust 200% overload protection and impact protected load cells. Our Etek series will provide a consistent accuracy for years to come.



### FEATURES

- Solid 1/5” thick steel deck
- Four 350 Ohm Load Cells
- 200% Overload Protection
- LCD Digital Indicator
- 18’ Steel Braided Cable
- Rechargeable Battery
- Ball Swivel Feet
- Low Profile 3.5” Height
- 110V AC Adapter Included
- Factory Calibrated for Accuracy
- Non-NTEP (Not legal for trade)

### SUGGESTED RETAIL PRICE:

|   |   |
|---|---|
| US-E4040 \$1045 / Optional Ramps: US-E4040R \$515 | US-E6060 \$1345 / Optional Ramps: US-E6048R \$595 |
| US-E4848 \$1195 / Optional Ramps: US-E4840R \$565 |   |

## US-E

| MODEL NUMBER | CAPACITY          | PLATFORM SIZE <small>(Inside Weighing Surface)</small> |
|--------------|-------------------|--|
| US-E4040     | 1,000 lb x 0.2lb  | Carbon Steel Platform 40”x40”                          |
| US-E4848     | 2,000 lb x 0.5 lb | Carbon Steel Platform 48”x48”                          |
| US-E6060     | 5,000 lb x 1 lb   | Carbon Steel Platform 60”x60”                          |



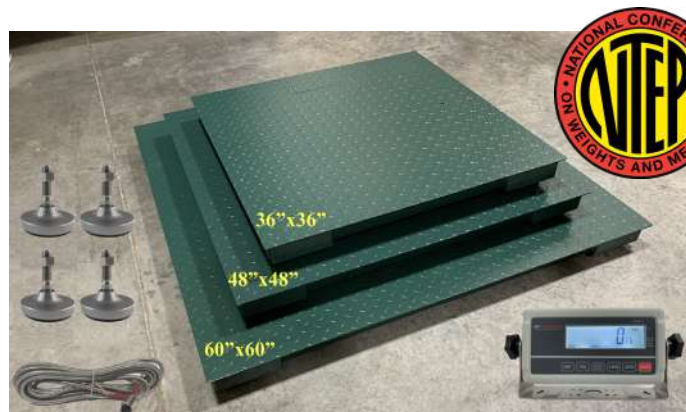
# US-TB “Thunderbolt” Floor Scale

## US-TB

USA Measurements “Thunderbolt” floor scale is designed for applications that require a reliable, durable, and efficient scale for years to come. US-TB comes in three size: 36”x36”, 48”x48”, and 60”x60” in a 1,000 lb to 10,000 lb selectable capacities. Our bright, large, and easy to read US-3011 indicator is included. Built with a robust 200% overload protection and impact protected load cells. Our Thunderbolt series will provide a consistent accuracy for years to come.

## FEATURES

- Solid 1/4” Thick Steel Plate
- Four 350 Ohms Load Cells
- 6 Channel Steel Bracing
- 200% Overload Protection
- LCD Digital Indicator (Rechargeable)
- A/C Adapter 110 Volts
- Four Swivel Leveling Feet
- 20 ft Braided Cable
- Platform Height 3”
- Factory Calibration
- 5 Year Manufacturer Warranty Steel Deck
- 2 Year Manufacturer Warranty Electronics
- NTEP Approved 19-133A1 (Legal for trade)



## SUGGESTED RETAIL PRICE:

US-TB3636 \$1545 / Optional Ramps: US-E4040R \$665

US-TB4848 \$1675 / Optional Ramps: US-E4840R \$745

US-TB6060 \$1945 / Optional Ramps: US-E6048R \$825

## US-TB

| MODEL NUMBER | CAPACITY          | PLATFORM SIZE                 |
|--------------|-------------------|-------------------------------|
| US-TB3636    | 1,000 lb x 0.2lb  | Carbon Steel Platform 36”x36” |
| US-TB3636    | 2,500 lb x 0.5 lb | Carbon Steel Platform 48”x48” |
| US-TB3636    | 10,000 lb x 2 lb  | Carbon Steel Platform 60”x60” |



# **LABEL PRINTING SCALE**

# US-DL9000 Label Printing Scale

## US-DL9000 (Ethernet, Wireless Networking, & USB) NTEP Approved

Unlike many other label printing scales on the market. Our US-DL9000 has everything packed into one scale. No need to upgrade down the road, replace, or buy software. This has everything you need. Dual range capacity: 30lb & 60lb, 20,000 PLU Including Ingredients Function, WiFi & Ethernet Connection, and 32 Standard Label Formats & 67 Customer Design Label Formats. This will fit all your needs for any business.



### SUGGESTED RETAIL PRICE:

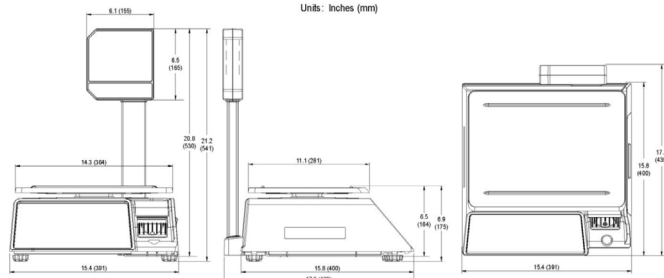
**US-DL9000 \$1399**

### FEATURES

- 30lb/60lb Capacity Dual Capacity
- Standard: 20,000 PLU's include Ingredients
- 168 Speed Keys(56 keys x 3)
- 32 Standard Label Formats & 67 Custom Labels
- High Speed Thermal Printer
- USB & network for easy firmware upgrades
- Multiple barcode formats
- English, Chinese, Korean, or Spanish Characters
- Menu Code System
- XDB Software Package
- Included – PLU Editor – Label Editor – Keypad Editor
- Compatible with Microsoft Windows
- Ethernet, Wireless Networking, USB, RS-232C Built-in
- CLASS III – NTEP Approved (Legal for trade)
- US-DL9000 Brochure

Pole Model

Units: Inches (mm)



# LIVESTOCK SCALES

# US-LS “The Livestock” Animal Scales

## US-LS

USA Measurements “The Livestock” scale measures 55” L x 20” W and has a 1,000 lb x 0.5 lb capacity. The US-LS5520 is great for weighing sheep, pigs, goats, hogs, swine, and many other animals. The built in ramped ends and low profile 3” height makes it very easy for animals to get on and off the scale. The optional cage allows the user to keep animals fixed on the platform.

### US-LS5520



#### FEATURES

- Platform diamond steel
- 1,000 lb x 0.5 lb Capacity
- 55” x 20” Platform Size
- LCD Digital Indicator
- AC Adapter Included
- 15’ Home Run Cable
- Low Profile Design 3”
- Portable with Handles
- Adjustable Leveling Feet
- Sealed and Contained Platform • 200% Overload Protection
- Built in Ramped Ends
- 2 Year Manufacturer Warranty • Non-NTEP (Not legal for trade)

### US-LS 5930



#### SUGGESTED RETAIL PRICE:

US-LS5520 \$1045

US-LS5930 \$1345

US-LS7839 \$2095

US-LS-CAGE \$595

### US-LS 8739



### US-LS-CAGE



## US-LS

| MODEL NUMBER | CAPACITY          | PLATFORM SIZE                 |
|--------------|-------------------|-------------------------------|
| US-LS5520    | 1,000 lb x 0.2lb  | Carbon Steel Platform 55”x20” |
| US-LS5520C   | 1,000 lb x 0.5 lb | Carbon Steel Platform 55”x20” |
| US-LS5930    | 2,000 lb x 1 lb   | Carbon Steel Platform 59”x30” |
| US-LS7839    | 3,000 lb x 1 lb   | Carbon Steel Platform 78”x39” |

## US-BC “Big Blue” Livestock Scale

### US-BC

USA Measurements “Big Blue” livestock scale for weighing animals. Any farmer, livestock owner, or 4H group understands how important it is to weigh animals. We need to track feed, check the animals weight gain, induce medicine, and weigh the animals prior to taking it to market. Our US-BC series is designed for a variety of animals: sheep, pigs, goats, hogs, swine, steers, cows, cattle, bulls, and more.

### US-BC7120



### US-BC8020



### US-BC7120HD



# US-BC “Big Blue” Livestock Scale

## US-BC8040



## FEATURES

- Industrial Caged System
- Diamond Plated Steel Deck
- Green LED Display
- Low profile Design with Adjustable Feet
- 1,000 lb & 3,000 lb Scale Capacity
- Multiple Platform Sizes
- Stainless Steel Junction Box
- US-731S Stainless Steel Indicator
- Indicator Operates on AC Power Adapter
- Indicator has Rechargeable Battery
- Outdoor Rated & Washdown Safe
- 5 year Warranty on Steel Frame
- 2 Year Warranty on Electronics
- Non-NTEP (Not legal for trade)

## US-BS

| MODEL NUMBER | CAPACITY        | PLATFORM SIZE                 |
|--------------|-----------------|-------------------------------|
| US-BC7120    | 1,000 lb x 1 lb | Carbon Steel Platform 71"x20" |
| US-BC7120HD  | 1,000 lb x 1 lb | Carbon Steel Platform 71"x20" |
| US-BC8020    | 3,000 lb x 1 lb | Carbon Steel Platform 80"x20" |
| US-BC8040    | 3,000 lb x 1 lb | Carbon Steel Platform 80"x40" |

## SUGGESTED RETAIL PRICE:

US-BC7120 \$2095

US-BC7120HD \$2795

US-BC8020 \$4495

US-BC8040 \$5795

# US-ESB “Easy Squeezy” Weigh Bars

## US-ESB

USA Measurements weigh bar scales are easy to use and squeeze under a cattle chute. Any farmer or owner of livestock understand how important it is to weigh animals. We need to check the animals health, induce medicine, provide the right feed amount, and to sell at market. If you own a cattle chute our US-ESB-4810K is the ideal scale for weighing animals. Your chute will need a platform and our weigh bars will squeeze under your chute. Once mounted you can zero out the weight of the chute and get an accurate weight of the animal.

## US-ESB

| MODEL NUMBER | CAPACITY         | PLATFORM SIZE                     |
|--------------|------------------|-----------------------------------|
| US-ESB4810K  | 10,000 lb x 1 lb | Carbon Steel Platform 48"x4"x3.5" |



## FEATURES

- 10,000 lb overall capacity (5,000kg)
- 1 lb Overall Accuracy (0.5 kg)
- Bar Size: 48" L x 4" W x 3.5" H
- Units: Lb, Oz, Kg, Lb:oz, grams, % weight
- 5 button operation
- Com ports: USB & RS-232
- Power: internal AC/DC adapter, AA Batteries
- Accumulating function
- Counting function
- Animal weighing function
- Non-NTEP (Not legal for trade)
- Unit Weigh: 72 lb (36 lb per bar)
- Operating Temp: -10°C to 40°C (14°F to 104°F)
- Warranty: 5 Years Frame
- Warranty: 2 Years Electronics

## SUGGESTED RETAIL PRICE:

US-ESB4810K \$1,195



# PRICE COMPUTING SCALE

# US-PC “The Pricer” Price Computing Scale

## US-PC

USA Measurements “The Pricer” price computing scale is designed for buying and selling produce, meat, fruit, farmers market, grocery stores, and many other food applications. The scale is NTEP approved Class III (legal for trade). The scale is designed with a stainless steel platform with an 11”x8” platform.



## FEATURES

- Multi-Interval Keyboard
- 11”x8” Stainless Steel Platter
- Tare Semi-Automatic (Push Button) Tare
- AC to DC Adapter
- Battery Power Supply
- Battery saving feature (auto shut-off)
- Programmable Tare with PLUs
- Unit Conversion (external)
- Serial and USB outputs
- Automatic Zero Tracking (AZT)
- Semi-Automatic Zero Setting Mechanism (SAZSM)
- Initial Zero Setting Mechanism (IZSM) Price per lb, kg or oz
- Alphanumeric display
- Label Printer optional, time & Date optional
- NTEP Approved 19-128A1 (Legal for trade)

## SUGGESTED RETAIL PRICE:

US-PC12 \$645

US-PC30 \$695

US-PC60 \$715

## US-LD

| MODEL NUMBER | CAPACITY                           | PLATFORM SIZE |
|--------------|------------------------------------|---------------|
| US-PC12      | 6 lb x 0.002 lb / 15 lb x 0.005 lb | 11”x8”        |
| US-PC30      | 15 lb x 0.005 lb / 30 lb x 0.01 lb | 11”x8”        |
| US-PC60      | 30 lb x 0.01 lb / 60 lb x 0.02 lb  | 11”x8”        |



**SHIPPING  
SCALE**

# US-LS “The Little Shipper” Platform Scale NTEP Approved

## US-LS

USA Measurements “Little Shipper” US-LS postal scale. Great for use with UPS stores, FedEx shipping, Post office, weighing boxes, small items, and NTEP requirements. The scale is built with a stainless steel platform 14”x12”. It has an LCD display with a 150 lb x .05 lb capacity.



## FEATURES

- Platform size: “12x14”
- Stainless Steel Platform
- 100% Safety Overload Protection
- Built in Leveling Bubble
- Spill Proof Base
- Low Profile Design with Adjustable Feet
- 2 Year Warranty on Steel Frame
- US-LS150 Shipping Scale Manual
- NTEP Approved 19-127A1 (Legal for trade)

## SUGGESTED RETAIL PRICE:

US-LS30 \$745

US-LS60 \$795

US-LS150 \$825

## US-LS

| MODEL NUMBER | CAPACITY         | PLATFORM SIZE                   |
|--------------|------------------|---------------------------------|
| US-LS30      | 30 lb x 0.01 lb  | Stainless Steel Platter 12”x14” |
| US-LS60      | 60 lb x 0.02 lb  | Stainless Steel Platter 12”x14” |
| US-LS150     | 150 lb x 0.05 lb | Stainless Steel Platter 12”x14” |



# WHEEL WEIGHERS

# US-GW “iPads” Wheel Weigher

## US-GW

USA Measurements US-GW “iPads” wheel weigher for avoiding DOT fines. This system comes in single pads, two weighing pads, three, or four. The iPads comes in two sizes: 16”x20” or 17”x27” with built in carrying handles. These portable scales are great for weighing your vehicle in any location.



| SUGGESTED RETAIL PRICE: |
|-------------------------|
| US-GW1620 \$2095        |
| US-GW1728 \$2245        |

## FEATURES

- Easy to use Scale
- Two sizes: 16”x20” or 17”x28”
- 20,000 lb Capacity Per Pad
- Easy on & off with Ramped Ends
- Built in Steel Carrying Handle
- 50 Hour Rechargeable Battery
- Designed for Portable Use
- 2.2” Overall Profile Height
- Unit Arrives Calibrated (Plug & Weigh)
- 16”x20” weighs 40 lb per pad
- 17”x28” weighs 60 lb per pad
- 200% Overload Protection
- 2 Year Warranty on Steel Frame
- 1 Year Warranty on Electronics
- Non-NTEP (Not legal for trade)

## US-GW

| MODEL NUMBER | CAPACITY         | PLATFORM SIZE                     |
|--------------|------------------|-----------------------------------|
| US-ESB4810K  | 10,000 lb x 1 lb | Carbon Steel Platform 48”x4”x3.5” |
| US-ESB4810K  | 10,000 lb x 1 lb | Carbon Steel Platform 48”x4”x3.5” |



## US-M “iWheel” Wheel Weighers

### US-M

USA Measurements offers our US-M2416 wheel pad scales for weighing cars, trucks, pick-ups, RVs, tractor trailers, oil tanks, dumper trucks and many other types of vehicles. Our scales come rated at a 25,000 lb capacity per pad. Allowing the user to weigh up to 50,000 lb per axle with two pads or 100,000 lb with four pads. The scales come equipped with our stainless steel indicator, steel braided cables, and receipt printer.



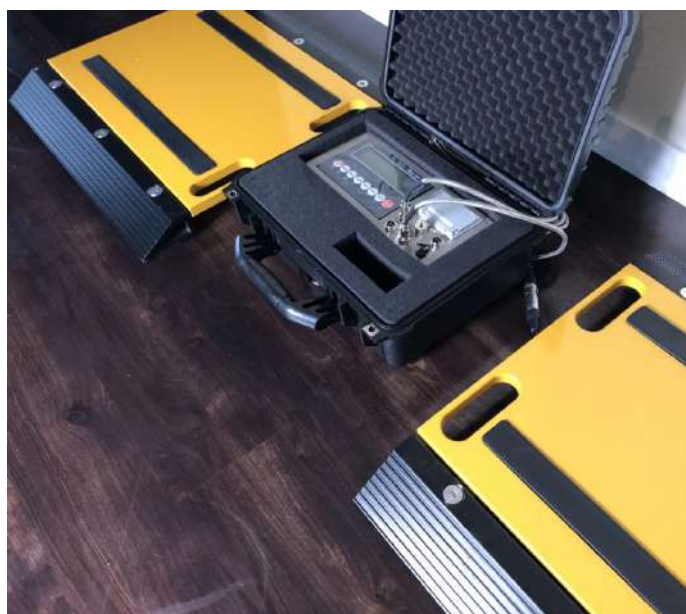
#### SUGGESTED RETAIL PRICE:

US-M2416-2 Pads \$6995

US-M2416-4 Pads \$9995

#### FEATURES

- 24"x16" Platform Size
- 2.2" Overall Height
- Built in Ramped Ends
- Built in Receipt Printer
- 200% Overload Protection
- Each Pad weighs 40 lb
- Low Profile Design
- Built in Carrying Handles
- Includes Case for Pads
- Battery Life up to 80 Hours
- Includes (2) Steel braided Cables
- 2 Year Warranty steel frame
- 1 Year warranty on electronics
- Non-NTEP (Not legal for trade)



# ACCESORIES

# Desktop Label Printer Os-2130D

## OS-2130D

The OS-2130D is a compact direct thermal desktop barcode printer that offers outstanding features and exceptional value. This easy-to-operate printer is ideal for low-to medium-volume printing needs. The OS-2130D is ideal for applications such as point-of-sale, weight scales, mailing, banking, ticketing, patient tracking, kiosks, and document labeling.

Key features of the OS-2130D include a USB port, an internal real time clock (RTC) and a buzzer. The USB allows easy connectivity with computers and other devices. The internal RTC facilitates time and date marking for standalone operation. The buzzer provides built-in error warning by beeping when media runs out or paper jams occur. With its easy operation, reliability, and space-saving size, the OS-2130D offers a high performance, cost-effective solution for your barcode and labeling requirements.



### SUGGESTED RETAIL PRICE:

OS-2130D: \$499

**Salmon Fillet**

INGREDIENTS: (HORGIE ROLLS) HORGIE ROLL DOUGH (ENRICHED W/WHY FLOUR (FLOUR, NIACIN, IRON, RS, RIBOFLAVIN, FOLIC ACID), UNREFINED VERY HIGH FRUCTOSE CORN SYRUP, CONTAINS LESS THAN 2% OF THE FOLLOWING: SALT, PARTIALLY HYDROGENATED SOY BEAN

| PACKED ON | SELL BY  | WT./LBS. |
|-----------|----------|----------|
| 04.18.11  | 04.19.11 | 10.95    |

0.86

2.99

32.74

PRICE PER LB. TOTAL(S) PRICE

**USA Measurements**

4005 W Reno Ave Ste E Las Vegas, NV 89118

**Flank Steak**

| PACKED ON | SELL BY  | WT./LBS. |
|-----------|----------|----------|
| 04.18.11  | 04.19.11 | 0.55     |

0.23

2.99

1.64

PRICE PER LB. TOTAL(S) PRICE

**USA Measurements**

4005 W Reno Ave Ste E Las Vegas, NV 89118

**SAFE HANDLING INSTRUCTIONS**

THIS PRODUCT WAS PREPARED FROM INSPECTED AND PASSED MEAT AND/OR POULTRY. SOME FOOD PRODUCTS CONTAIN BACTERIA THAT COULD CAUSE ILLNESS IF THE PRODUCT IS MISHANDLED OR COOKED IMPROPERLY. FOR YOUR PROTECTION, FOLLOW THESE SAFE HANDLING INSTRUCTIONS:

- KEEP REFRIGERATED OR FROZEN. THAW IN REFRIGERATOR OR MICROWAVE.
- KEEP RAW MEAT AND POULTRY SEPARATE FROM OTHER FOODS.
- WASH WORKING SURFACES INCLUDING CUTTING BOARDS, UTENSILS AND HANDS AFTER TOUCHING RAW MEAT OR POULTRY.
- COOK THOROUGHLY. KEEP HOT FOODS LEFTOVERS IMMEDIATELY OR DISCARD.

**Ribeye Steak**

| PACKED ON | SELL BY  | WT./lb |
|-----------|----------|--------|
| 04.18.11  | 04.19.11 | 4.93   |

0.23

2.99

14.74

PRICE PER LB. TOTAL(S) PRICE

**USA Measurements**

4005 W Reno Ave Ste E Las Vegas, NV 89118

**Chicken Thighs**

| PACKED ON | SELL BY  | NET WT./LBS. | PRICE PER LB. | TOTAL(S) PRICE |
|-----------|----------|--------------|---------------|----------------|
| 04.18.11  | 04.19.11 | 4.92         | 2.99          | 14.71          |

0.86

2.99

14.71

PRICE PER LB. TOTAL(S) PRICE

**USA Measurements**

4005 W Reno Ave Ste E Las Vegas, NV 89118

**SAFE HANDLING INSTRUCTIONS**

THIS PRODUCT WAS PREPARED FROM INSPECTED AND PASSED MEAT AND/OR POULTRY. SOME FOOD PRODUCTS CONTAIN BACTERIA THAT COULD CAUSE ILLNESS IF THE PRODUCT IS MISHANDLED OR COOKED IMPROPERLY. FOR YOUR PROTECTION, FOLLOW THESE SAFE HANDLING INSTRUCTIONS:

- KEEP REFRIGERATED OR FROZEN. THAW IN REFRIGERATOR OR MICROWAVE.
- KEEP RAW MEAT AND POULTRY SEPARATE FROM OTHER FOODS.
- WASH WORKING SURFACES INCLUDING CUTTING BOARDS, UTENSILS AND HANDS AFTER TOUCHING RAW MEAT OR POULTRY.
- COOK THOROUGHLY. KEEP HOT FOODS LEFTOVERS IMMEDIATELY OR DISCARD.

**Ground Beef**

| PACKED ON | SELL BY  | WT./LBS. | PRICE PER LB. | TOTAL(S) PRICE |
|-----------|----------|----------|---------------|----------------|
| 04.18.11  | 04.19.11 | 0.41     | 2.99          | 1.23           |

0.23

2.99

1.23

PRICE PER LB. TOTAL(S) PRICE

**USA Measurements**

4005 W Reno Ave Ste E Las Vegas, NV 89118



# USA Measurements

"We Outmeasure the Competition"



[www.usameasurements.com](http://www.usameasurements.com)  
4005 W Reno Ave Ste E Las Vegas, NV 89118  
Phone: 800-711-2237