



NATIONAL TYPE EVALUATION PROGRAM

Certificate of Conformance

for Weighing and Measuring Devices

For:

Indicating Element
Electronic, Non-Computing
Model: US-6011MS-LCD, US-6011SS-LCD, US-6011MS-LED, & US-6011SS-LED
 n_{max} : 10 000
Accuracy Class: III

Submitted By: Contact Info. Updated October 2022

USA Measurements
3915 West Hacienda Avenue
Suite A-117
Las Vegas, NV 89118
Tel: 800-711-2237
Contact: Fred Herrmann
Email: sales@usameasurements.com
Web site: www.usameasurements.com

Standard Features and Options

- Automatic Zero Tracking (AZT)
- Initial Zero Setting Mechanism (IZSM)
- Semi-Automatic Zero (Push Button)
- Semi-Automatic Tare (Push Button)
- AC Power
- DC Power / Internal Battery
- Alphanumeric Display
- Gross / Net Display
- Liquid Crystal Display
- 4-20 mA Loop
- RS-232 Communication Port
- Wireless Communication

This device was evaluated under the National Type Evaluation Program and was found to comply with the applicable technical requirements of "NIST Handbook 44: Specifications, Tolerances and Other Technical Requirements for Weighing and Measuring Devices." Evaluation results and device characteristics necessary for inspection and use in commerce are on the following pages.

Mahesh Albuquerque
Chairman, NCWM, Inc.

Ivan Hankins
Chair, NTEP Committee
Issued: August 8, 2022

1135 M Street, Suite 110 / Lincoln, Nebraska 68508

The National Conference on Weights and Measures (NCWM) does not approve, recommend or endorse any proprietary product or material, either as a single item or as a class or group. Results shall not be used in advertising or sales promotion to indicate explicit or implicit endorsement of the product or material by the NCWM.



UDA Measurements

Indicating Element / US-6011MS-LCD, US-6011SS-LCD, US-6011MS-LCD, & US-6011SS-LED

Application: General purpose indicating element when connected to an NTEP certified and compatible weighing/load receiving element.

Identification: The self-destructive identification badge may be found on the back of the indicating element.

Sealing: A wire security seal must be used by sealing two (2) predrilled sealing screws on the back of the indicator

Test Conditions: This certificate is issued based upon the following tests and upon information provided by the manufacturer. One model US-6011SS-LCD and one model; US-6011SS-LED indicators were submitted for this evaluation. Both indicators were connected to Locosc weighing/load receiving element equipped with Zemic model L6N load cells (NTEP CC 11-012) and then tested for accuracy over a temperature range of -10 °C to 40 °C (14 °F to 104 °F). The device was tested for discrimination, power interruption, zero tests. Additionally, the device was tested with a supply voltage of 100VAC to 130VAC and 5.1VDC to 6.6VDC.

Evaluated By: E. Morabito (NY)

Type Evaluation Criteria Used: *NIST Handbook 44 Specifications, Tolerances, and Other Technical Requirements for Weighing and Measuring Devices*, 2020 Edition. *NCWM Publication 14 Measuring Devices*, 2020 Edition.

Conclusion: The results of the evaluation and information provided by the manufacturer indicate the device complies with applicable requirements.

Information Reviewed By: D. Flocken (NCWM)

Example(s) of Device:



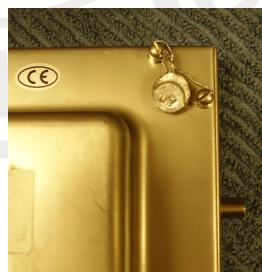
Model US-6011MS-LCD



Model US-6011SS-LED



Data Label Location



Method of Sealing