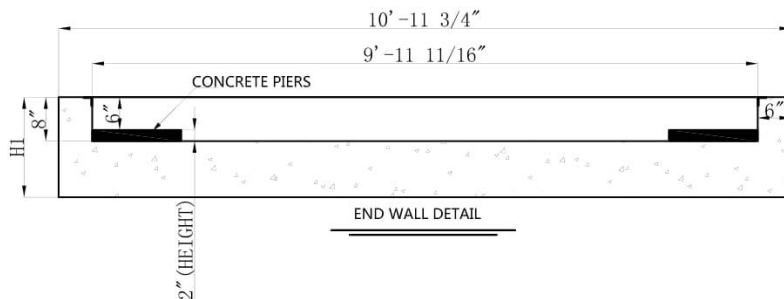
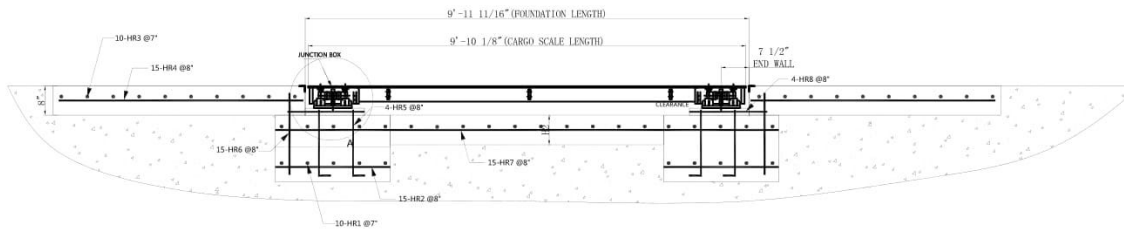


A DETAIL(3:1)

**NOTES:**

1. IN AREAS WITH FROST, H1=48" THICK UNDER THE PIERS; IN AREAS WITHOUT FROST, H1=18" THICK UNDER THE PIERS.
2. DEPENDING ON SOIL AND FROST CONDITIONS, PIT FLOOR(H2) SHALL RANGE FROM 6"TO 8" THICK.



**FOUNDATION REINFORCING BAR SCHEDULE  
ASTM A615 GRADE 60 (FOR REFERENCE ONLY)**

MARK	NO.REQ'D	SIZE	LENGTH	WT(lb).
HR1	30	#4	10'	201
HR2	30	#4	2'-6"	51
HR3	20	#4	10'	134
HR4	30	#4	5'-6"	113
HR5	8	#4	1'-6"	8
HR6	30	#4	2'-6"	50
HR7	15	#4	11'	110
HR8	8	#4	1'-10"	10
<b>TOTAL WT:</b>				<b>667</b>

**REINFORCING STEEL NOTES:**

1. REINFORCING STEEL SHALL BE FREE OF ALL MUD, DEBRIS, CEMENT GROUT, LOOSE RUST, GREASE, AND OIL
2. TACK WELDING OF BARS IS PROHIBITED.

**FOUNDATION CONCRETE REQUIREMENTS  
fc=3500 P.S.I (FOR REFERENCE ONLY)**

AREA	QUANTITY
APPROACHES	2.8 CU.YD
FLOOR AT 8" THICK	1.8 CU.YD
PIERS	0.8 CU.YD
<b>TOTAL</b>	<b>5.4 CU.YD</b>

LET	BY	DATE	REVISION

name:	<b>CARGO SCALE 10'X10' FOUNDATION DRAWING</b>
date:	1/3/18
material:	
drawn by:	Huang
sheet	1 of 1

The material and information shown on this drawing are the property of Future Welding Institute and are to be used, stored, copied, transferred or reproduced without the prior written permission of Future Welding Institute.

MAINTENANCE:	